

The Jeans Collection

Video 9 - Creating the front fly zipper - Ladies

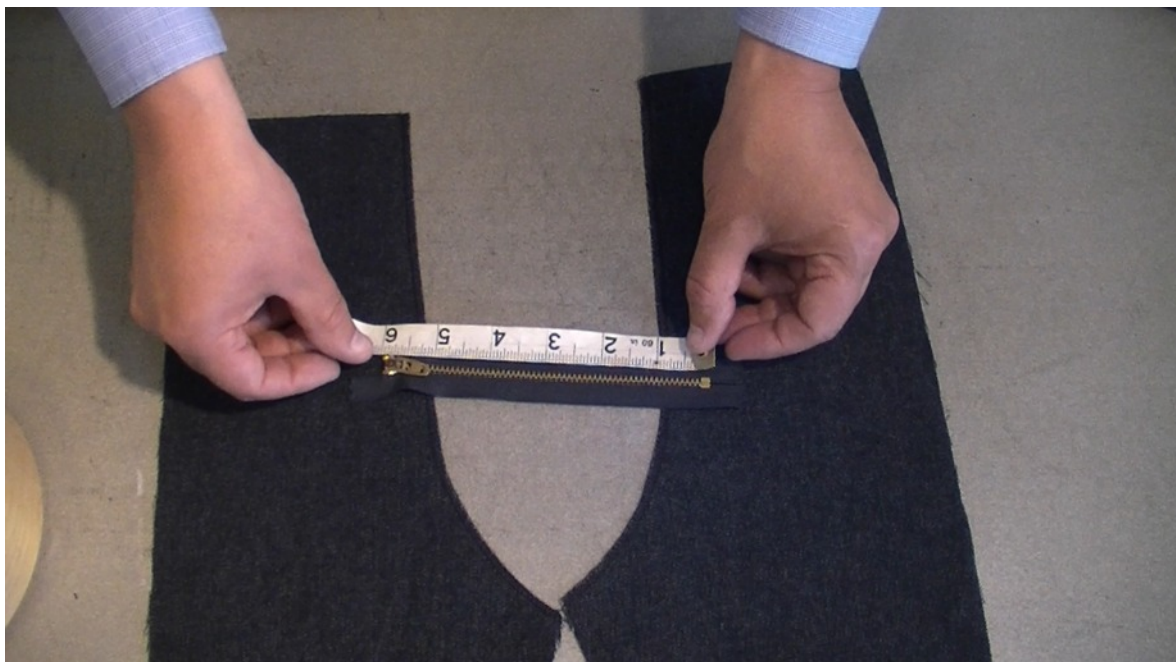
The tools that you will need:

- 1. Sewing threads - standard sewing thread and top stitching thread.*
- 2. Small sharp scissors for cutting thread ends.*
- 3. A jeans foot is required for sewing jeans. An optional walking foot is great for top stitching.*
- 4. Zipper foot for inserting the zipper.*
- 5. A zip for jeans - measure the length of zipper that you are going to need.*
- 5. Sewing machine needles - 100 or 110 for sewing denim or thick cotton fabrics.*
- 6. Tape measure.*
- 7. Pins.*
- 8. Fabric shears.*

Part 1 - Left over right for a ladies closure .

When creating the zipper closure for a pair of ladies jeans the left front panel sits over the top of the right front panel.

Just to recap we are going to need the 2 facing pieces, one being double the width than the other which we create in the next part and your jeans zipper. First determine how long a zipper you are going to need. The zipper sits on the straight part of the front panel. Measure the length and use the correct length of zipper, in our case we are going to use a zipper measuring 6 inches in length.



The front zipper should be the length of the straight part of the front panel only, just before the curve starts .

Part 2 - creating the facings.

Measure the cloth part of the zipper and add on about 1 - 2 cm extra in length for the facings and 5.5 to 6 cm in width for the top facing. The under facing (where the zipper is going to be attached) needs to be double in width but keeping the same length.



Determine the length of the zipper facing by measuring the cloth part of the zipper rather than the coils.



Once you have the length determined cut out the facings and place the narrow facing (which is going to be the top facing piece) onto the left front pane. Next draw a curve in chalk to mark where you will cut to shape the facing piece.



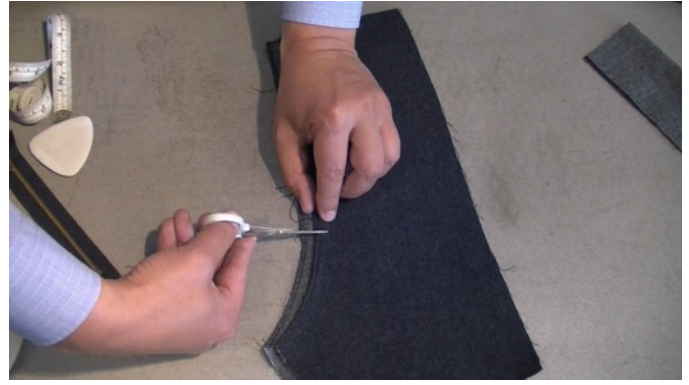
Cut the facing along the chalk line to create the correct shape. Next we need to overlock the curved edge only with the top and straight sides being left as raw edges.

Part 3 - Attaching the facings,



Place the newly overlocked facing onto the main left hand front panel with right sides facing each other and stitch along the straight edge from the start of the facing curve to the top. Stitch with about a 1 cm seam allowance.

You can see the line of where the stitching is going to be indicated by the pins in the image above.



When the facing is stitched in place, lay the other main front panel over the left front panel with a 1 cm gap showing around the curved part of the seam as in the left image above. Snip through the **right front panel** only creating a notch the same width as a 1 cm seam allowance. The notch needs to be in line where your stitching ended when attaching the facing, you can see this in the left image above.



Press the facing as shown in the left image above and continue pressing around the curved part of the main front panel. Position the right front panel (the panel with the small notch) in alignment so that the curved part will lay under the pressed seam. Pin in position and stitch using your top stitching thread around the curved part only. Stitch from the start of the notch around the end of the seam. Your stitching line needs to be 1 cm in from the edge just catching the raw edge of the newly pressed seam. You can see where the pins are situated in the left hand image above. This first row of stitching will create the beginning of the flat felled seam.

Part 4 - Finishing the flat felled seam.



Once you have created the first row of stitching, press the facing back and stitch a double row of top stitching along the facing part as shown in the right image above. Stitch to the point where you created your first row of stitching, they will look like a continuous row of stitching.



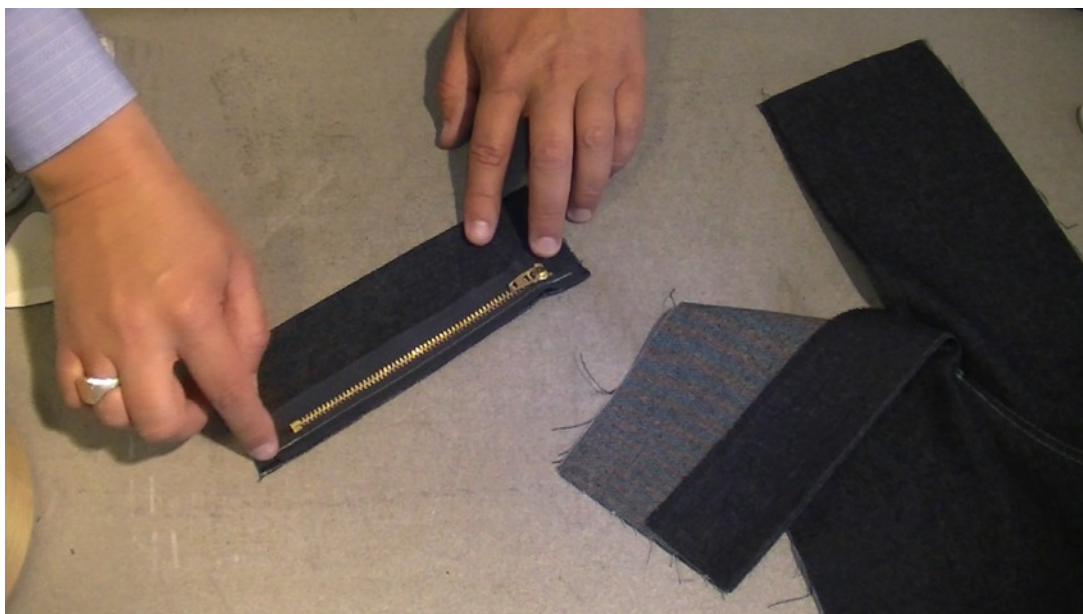
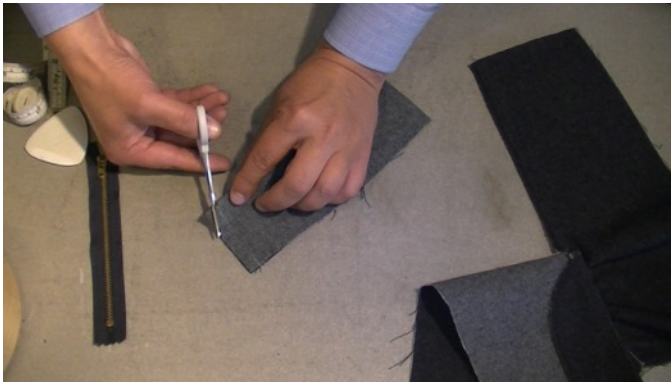
Press the seam down around the crotch part of the main panels creating the flat felled seam. Stitch the seam down again using your top stitching thread.



When you have stitched the second row of stitching around the crotch you will have completed the top stitching to this point. When you open the fly you will notice that the notch that you created in part 3 will lay underneath the top facing part about 1.5 cm in, this forces the zipper to lay further back resulting in a neat front closure.

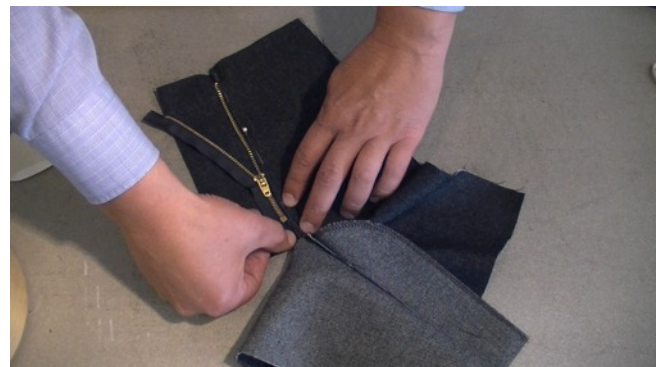
Part 5 - Creating the under facing.

Fold the under facing in half with right sides facing in on each other. Stitch along one side with a 1 cm seam allowance. Once stitched snip the corner and fold out the right way. Press your facing so that it lays flat as shown in the images below.



Part 6 - Attaching the under facing.

The next step is to overlock the raw edge of the under facing. Then place the zipper onto the overlocked side and attach the zipper, using a zipper foot. Stitch from the top to the bottom attaching the entire zipper in place.



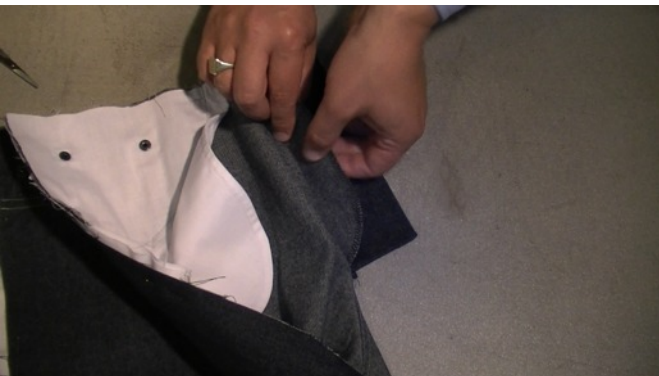
Now with the under facing and the zipper ready, turn over the front main panels so that you are looking at the insides. Press the seam as shown in the left image above starting at the opening end and fold the seam 0.5 cm and taper it to a 1 cm seam allowance when you reach the top. Now turn the front panels over so you can see the right sides and attach the under facing (the facing with the attached zipper) to the newly pressed seam. Make sure that the facing is aligned straight with the top of the main panel. Stitch the facing in place close to the zipper coil. Use the zipper foot for this operation.

Part 7 - Securing the zipper.

Position the left panel over the right as if it is in the closed position, make sure everything is laying flat and that the top stitched seam is laying straight and overlapping enough so that you do not see the zipper peaking out. While holding the the front panels in the closed position, flip the left hand panel over with your other hand. When the panel is flipped grab hold the position of the zipper and the upper facing together and secure with pins. Before you stitch the zipper in place make sure that it is all aligned by opening and closing the zipper a few times as to see if indeed it is laying aligned and the slider runs freely. Once aligned stitch in place.



Hold the panels in the closed position (left upper image) and flip the right panel over(right above image).



When the panel is flipped grab hold of the zipper and the upper facing and secure with pins ready to be stitched in place.



Once you have the zipper stitched in place, we need to attach the same facing piece to the front panel. To align make sure you are looking at the inside of the jeans front panels and close the zipper. When the zipper is closed everything will be laying flat and where it wants to, giving you the confidence that nothing is distorted. Hold the facing down while you open the zipper and pin the facing to the right front panel. If you have pinned this correctly your facing should look like the image above. We are now ready to put in the double row of top stitching to secure the facing down, this not only acts as decorative feature but also as a practical part of attaching the facing in place.

Part 8 - The final top stitching.

The top stitching runs as a double row from the top of the jeans, straight down and curving in to just beyond the zipper coil stopper. The top stitching mimics the shape of the facing which you can see on the inside. When you are putting this stitching in place, I find that it is best to secure this top stitching in place from the inside as you can see the shape of the facing which acts as a guide.



Part 9 - The final top stitching.

When you top stitched the facing in place as shown in the image above, you will notice that there is a small gap that still needs to be breached, this is normal. To secure this small gap we need to carry the stitching on as if it is one continuous line. Make sure that the zipper is closed and everything is laying flat. Once you are happy with how the panels are looking, top stitch through all of the layers (front panels and facings) to breach the small stitching gap and any seams that need closing up around the crotch area of the front panels, this will secure the bottom of the fly and makes the top stitching complete.



With all the top stitching in place, this now completes the front fly closure with a zipper for a pair of ladies jeans.