

The Jeans Collection

Video 15 - Attaching the inside leg seams

The tools that you will need:

- 1. Sewing threads - top stitching thread.*
- 2. Small sharp scissors for cutting thread ends.*
- 3. A jeans foot is required for sewing jeans. An optional walking foot is great for top stitching..*
- 4. Sewing machine needles - 100 or 110 for sewing denim or thick cotton fabrics.*
- 5. Tape measure.*
- 6. Pins.*
- 7. Fabric shears.*

Part 1 - The direction of the seam.

When it comes to attaching the inside leg panels together, the first thing you need to do is establish the way the flat felled seam is going to face. Inside leg seams always face towards the back.

Working with just the front panels only, fold the seam at just one small point and pin into position as shown in the image below, this establishes the direction of the seam.



Make sure the inside leg seam is facing backwards.

Turn over the front panels so that you see the inside of the denim fabric. You will notice more clearly how we are going to attach the first part of the flat felled seam for the inside leg. You should be able to see the way the seam is going to face from the pin that you attached earlier.



Take out the pin and place the back panels on top of the front panels, leave a 1 cm overhang so you should see the front panels sticking out along the inside leg by about 1 cm as shown in the image below. We are now ready to fold and position the panels in place.



Part 2 - Folding the seam in place.

Fold the seam from the front panel over and onto back panel, press the seam down as shown in the image below. Make sure that the crotch point seams are going to align exactly as to create a continuous stitch line. Press the seam all the way along from the hem of the left leg, over the crotch and all the way to the hem of the right leg. Pin the pressed seam to secure ready for stitching.



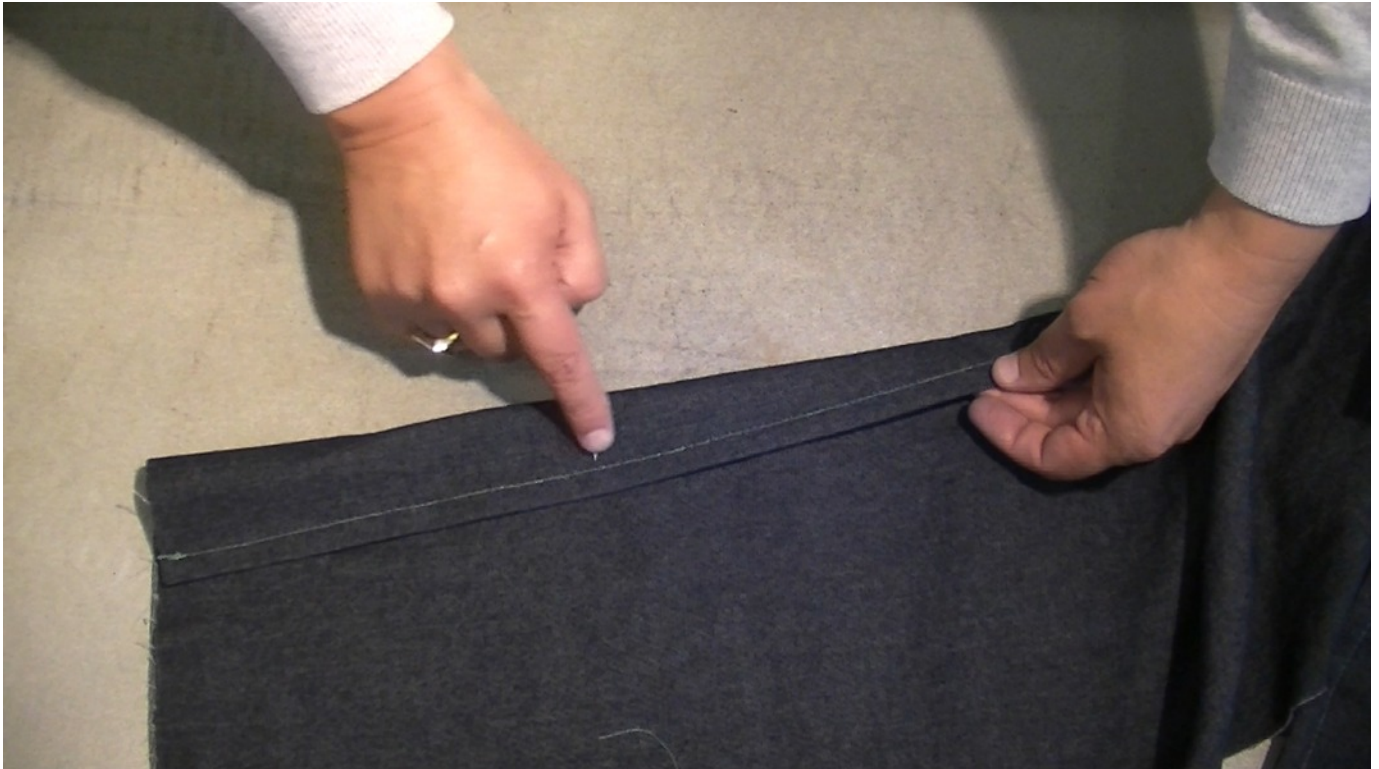
Keep the crotch aligned.

It is very important the crotch seam aligns exactly from the front to the back. When the flat felled seam is finished you should see a continuous row of stitching as too keep the seams very neat and professional.



Part 3 - Stitching down the seam.

Stitch the seam with your top stitching thread just catching in the raw edge which will create the seam to be in 1 cm in from the edge. If done correctly your top stitching should look like the image below.



Now that you have created the first part of the flat felled seam, press to make everything lay flat and clean cut. Roll the newly pressed seam over as to make the raw edges disappear in on themselves, this establishes the final part of the flat felled seam.

Press the seam in place ready for the final stitching.



Part 4 - The final top stitching.

With the seam pressed down, pin to secure. Finally stitch along the edge of the seam as to create the double row of top stitching and finish the flat felled inside leg seam.



This concludes the finished flat felled seam for the inside leg of your jeans. Please note that the crotch point should be aligned as to create a really nice neat finish.

With the inside leg seams complete, you are now ready to attach the outside leg panels together.

