

The Jeans Collection

Video 12 - Attaching the back yolk

The tools that you will need:

- 1. Sewing threads -Top stitching thread.*
- 2. Small sharp scissors for cutting thread ends.*
- 3. A jeans foot is required for sewing jeans. An optional walking foot is great for top stitching..*
- 4. Sewing machine needles - 100 or 110 for sewing denim or thick cotton fabrics.*
- 5. Tape measure.*
- 6. Pins.*
- 7. Fabric shears.*

Part 1 - Where is the yolk?

The yolk on a pair of jeans is the back panels situated between the top of the main panel and the waistband. The back yolk is made up of a left and a right and then stitched to the top back main panels.

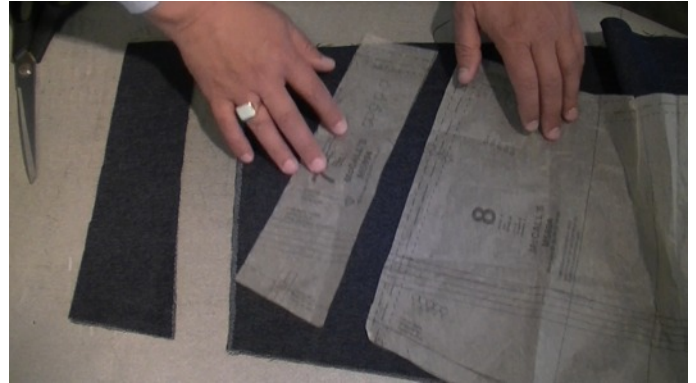
The back yolks add shaping along with a decorative touch as they are all flat felled seams which carry the top stitching that you see throughout your jeans.



The back yolk panels on a pair of jeans.

Part 2 - Positioning the yolks.

There are 2 yolk pieces, a left and a right and each are shaped to have a top and a bottom, the bottom being attached to the top of the main back panel. If you cannot see which is the top and bottom of the yolk, refer back to your pattern which will show you which is which. It is very important that these yolks attach the back panels in the correct way as they give shaping to the back.



Part 3 - Attaching the yolk

The flat felled seam attaching the yolks always face upwards. Firstly lay your main back panel facing down so you will see the wrong side (the inside of the panel) place the yolk panel with a 1 cm gap onto the main back panel with the wrong sides facing in on each other as shown in the image below. Remember right yolk onto the right back panel.



Place the yolk onto the back panel with the wrong sides facing in on each other.

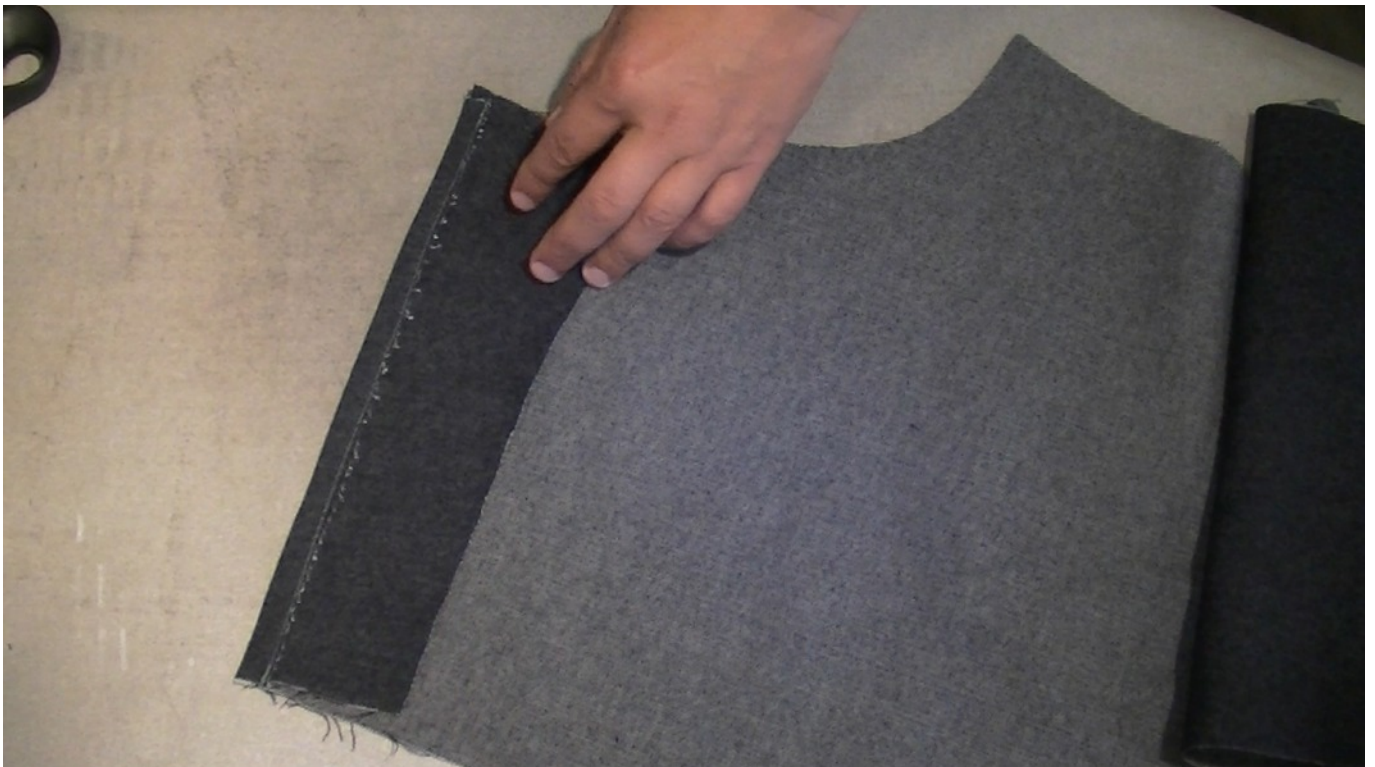
With the yolk placed 1 cm down from the top of the back panel, fold and press the top of the back panel down onto the yolk and pin into position as shown in the image below. Do this for both the left and the right panels.



Part 4 - stitching the first part of the yolk.

Stitch the pressed seam in place using your top stitching thread, stitch 1 cm down from the top making sure you catch the pressed seam so just above the raw edge. You can use the raw edge as a guide.

Stitch the left and right yolks at the same time.



When you have stitched the first part, press the seams so that everything is laying nice and flat. Still looking at the wrong sides fold the yolk part to face upwards and press down again, this will make the raw edges of the seam disappear in on its self. Turn the whole panel over and pin the seam in place as shown in the image below.



Part 5 - The final row of stitching.

Stitch along the pressed seam as to create a double row of stitching. This completes the process of attaching the yolks to the back panels.

If done correctly the flat felled seam should look like the image below.

